

THE NATIONAL WATER RESOURCE BALANCES PERSPECTIVES FOR SOUTH AFRICA

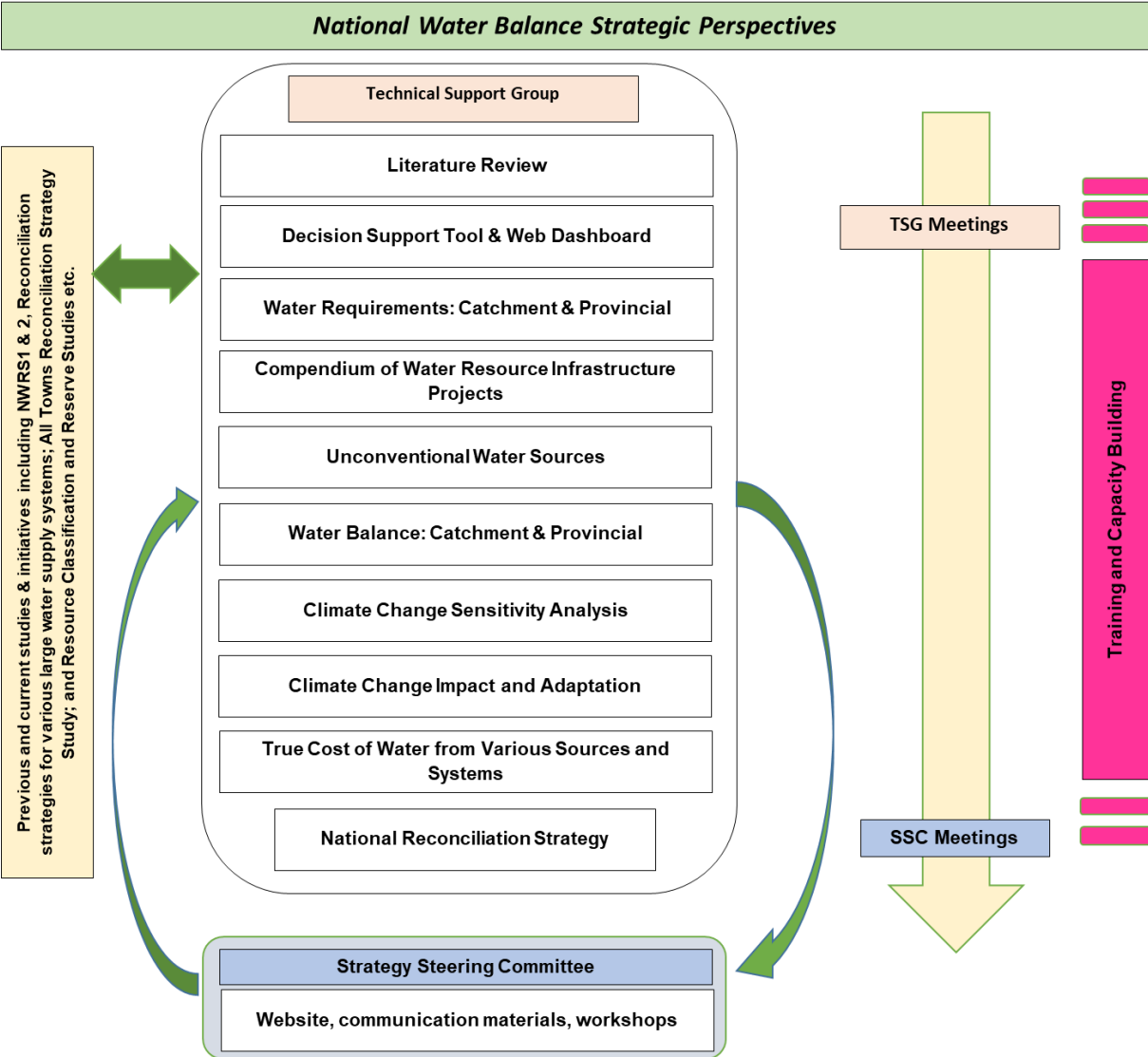
STAKEHOLDER ENGAGEMENT

Stakeholder engagement, underpinned by effective administrative support, is key to the successful development of the National Water Balance Perspectives and associated Water Resources Strategy for South Africa. Communication, sharing of information and engagement between members of the Department of Water and Sanitation (DWS), the Study Steering Committee (SSC) and the Professional Services Provider (PSP) structures are vital.

The logistics and arrangements of the SSC are key to the successful development of the Strategy. Invitations are distributed to members together with a response sheet, an agenda as well as the relevant documents to be discussed at the meetings. Minutes of meetings are distributed to members after each meeting.

Directly involved stakeholders are informed of the study and its progress at the SSC Meetings. The following activities are used to keep stakeholders informed:

- Background information documents (BID): BIDs are produced to keep SSC members and other stakeholders informed. Links to the background information documents BID are found in Reports and Documents.
- Access to information: The DWS project web site publishes all project documents to stakeholders to review and comment on.

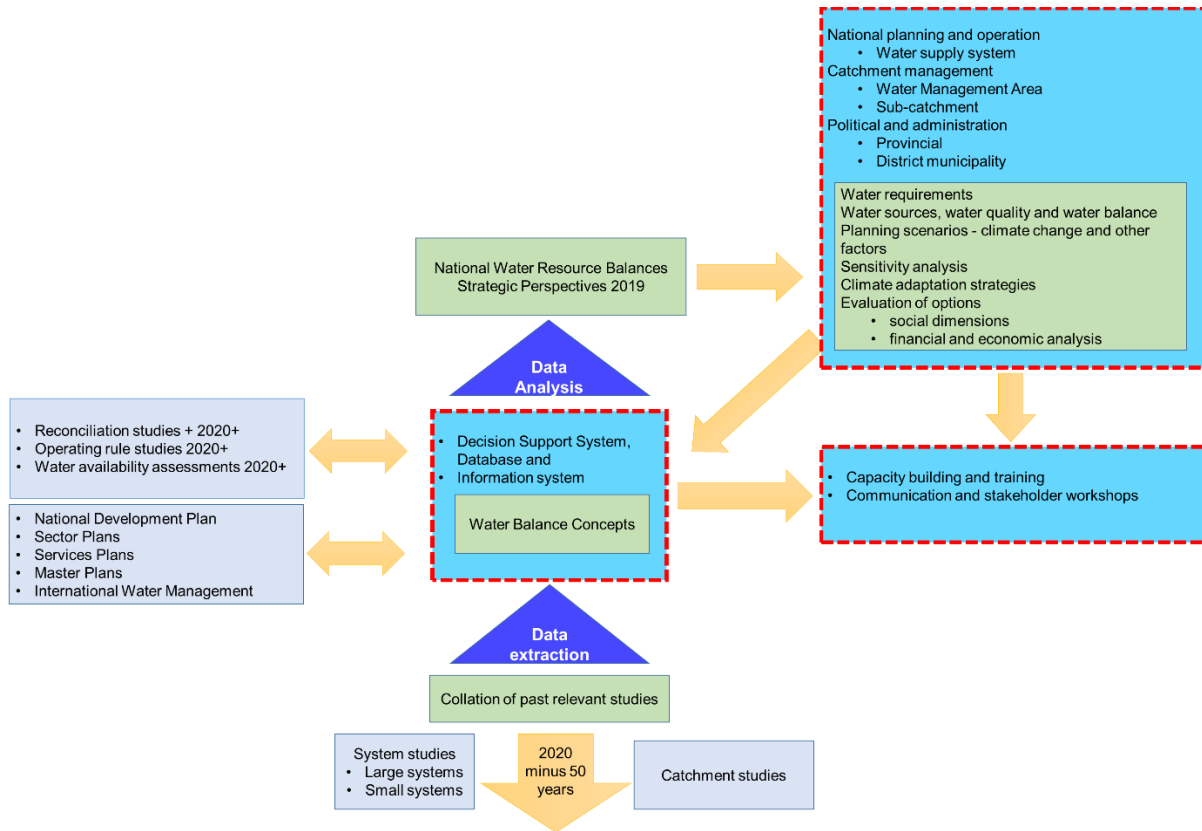


Stakeholder Participation Process

The Study Steering Committee (SSC), will provide high-level direction and guidance with support of the Study Administration and Management (SAM) team and Technical Support Group (TSG). The SSC is a platform for key stakeholder consultation. It comprises of representatives of relevant DWS Directorates, other National and Provincial Government Departments, municipalities, Catchment Management Agencies (CMAs), Water Boards, business and mining, water users’ organisations and other interested parties identified during the course of the study. It will appropriately communicate progress and findings to all relevant stakeholders the public at large and take necessary steps to ensure implementation of the revised National Water Resource Reconciliation Strategy.

Technical Process

The technical process begins with collation and review of the previous studies and any current available information.



Water balance concepts are defined and the Decision Support System (DSS) database and web-enabled dashboard are set up. Available data is analyzed and the water balance concepts are applied to obtain updated water balances. A Communication Strategy and Plan and a Capacity Building and Training plan are developed and implemented.

Study Management

The ongoing management and guidance of the Study is provided by the Study Administration and Management (SAM) team comprising representatives of the Client and the PSP (Study Team).